

SCALE	DATE	DEALT	CHECKED
1:100	06.04.21	SUBP1A	SOURAV

AGRAWAL & AGRAWAL
ARCHITECTS
BARODA KOLKATA

PROJECT: REDESIGNED FLOOR PLAN OF (3RD, 8TH & 9TH) STORED PLAN OF O.H.W.R.
TITLE: TYPICAL FLOOR PLAN, TYPICAL FLOOR PLAN, PART 1, PART 2, PART 3, PART 4, PART 5, PART 6, PART 7, PART 8, PART 9, PART 10, PART 11, PART 12, PART 13, PART 14, PART 15, PART 16, PART 17, PART 18, PART 19, PART 20, PART 21, PART 22, PART 23, PART 24, PART 25, PART 26, PART 27, PART 28, PART 29, PART 30, PART 31, PART 32, PART 33, PART 34, PART 35, PART 36, PART 37, PART 38, PART 39, PART 40, PART 41, PART 42, PART 43, PART 44, PART 45, PART 46, PART 47, PART 48, PART 49, PART 50, PART 51, PART 52, PART 53, PART 54, PART 55, PART 56, PART 57, PART 58, PART 59, PART 60, PART 61, PART 62, PART 63, PART 64, PART 65, PART 66, PART 67, PART 68, PART 69, PART 70, PART 71, PART 72, PART 73, PART 74, PART 75, PART 76, PART 77, PART 78, PART 79, PART 80, PART 81, PART 82, PART 83, PART 84, PART 85, PART 86, PART 87, PART 88, PART 89, PART 90, PART 91, PART 92, PART 93, PART 94, PART 95, PART 96, PART 97, PART 98, PART 99, PART 100

CERTIFICATE OF ARCHITECT
I CERTIFY THAT ALL THE ARCHITECTURAL DRAWINGS OF THE PROJECT AT L.N. ROAD, BARODA, DISTRICT BARODA, GUJARAT, INDIA, HAVE BEEN PREPARED BY ME OR UNDER MY SUPERVISION AND I AM A REGISTERED ARCHITECT UNDER THE ARCHITECTS ACT, 1947 AND I AM A MEMBER OF THE BARODA ARCHITECTS ASSOCIATION.

CERTIFICATE OF STRUCTURAL ENGINEER
I CERTIFY THAT THE STRUCTURAL DRAWINGS AND DESIGN OF BOTH THE FOUNDATION AND SUPERSTRUCTURE OF THE BUILDING HAS BEEN MADE UNDER THE ACT AND ALSO CONSIDERING THE POSSIBLE LOADS, SEISMIC LOAD AND THE MOMENTS GENERATED BY THE CONSTRUCTED STRUCTURE AS PER THE CODE OF PRACTICE AND CERTIFIED THAT IT IS SAFE AND STABLE IN RESPECT TO THESE PROVISIONS SHALL BE ADHERED TO DURING THE CONSTRUCTION.

SIGN. OF P.H.E.
MR. RANJAN K. SARKAR
REG. NO. - PHER-1000000000001

SIGN. OF ELEC. ENGG.
MR. SANTANU MUKHOPADHYAY
REG. NO. - EBERMKA/10000018

SIGN. OF GEO TECHNICAL ENGG.
MR. SUNIT KUMAR BOSE
REG. NO. - GSTR-10000000000000

SIGNATURE OF OWNER
MR. SHYAM SUNDRAM MALANI
19/1, N. G. ROAD, KOLKATA - 700 007.

OTHER OWNER NAME
SILVER SPRING ADVISORY PVT LTD
HIMMAT ADVISORY (P) LTD
GAMNAN TRADERS PVT LTD
MEGARBIT ADVISORY PVT LTD
GLAZE COMMERCIAL PVT LTD
MULTITRAC ADVISORY PVT LTD
TRIDEV SALES PVT LTD
RAGHUNATH GOODS PVT LTD
HIMMATI RESEARCH PVT LTD
DIGNITI GOODS PVT LTD
DAMN BEAUTONS PVT LTD
PASSWORD VAPAR PVT LTD
KEARN NATH DHOOT
SANTOSH DEVI DHOOT
PUSHPA DHOOT
SHAM SUNDAR MALANI
MR. SHYAM SUNDRAM MALANI

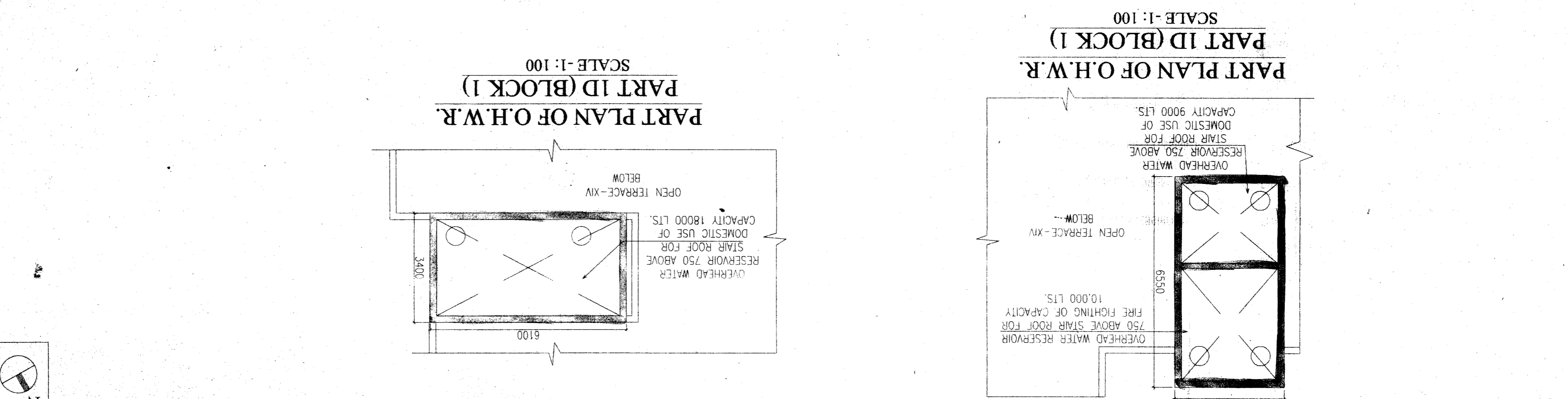
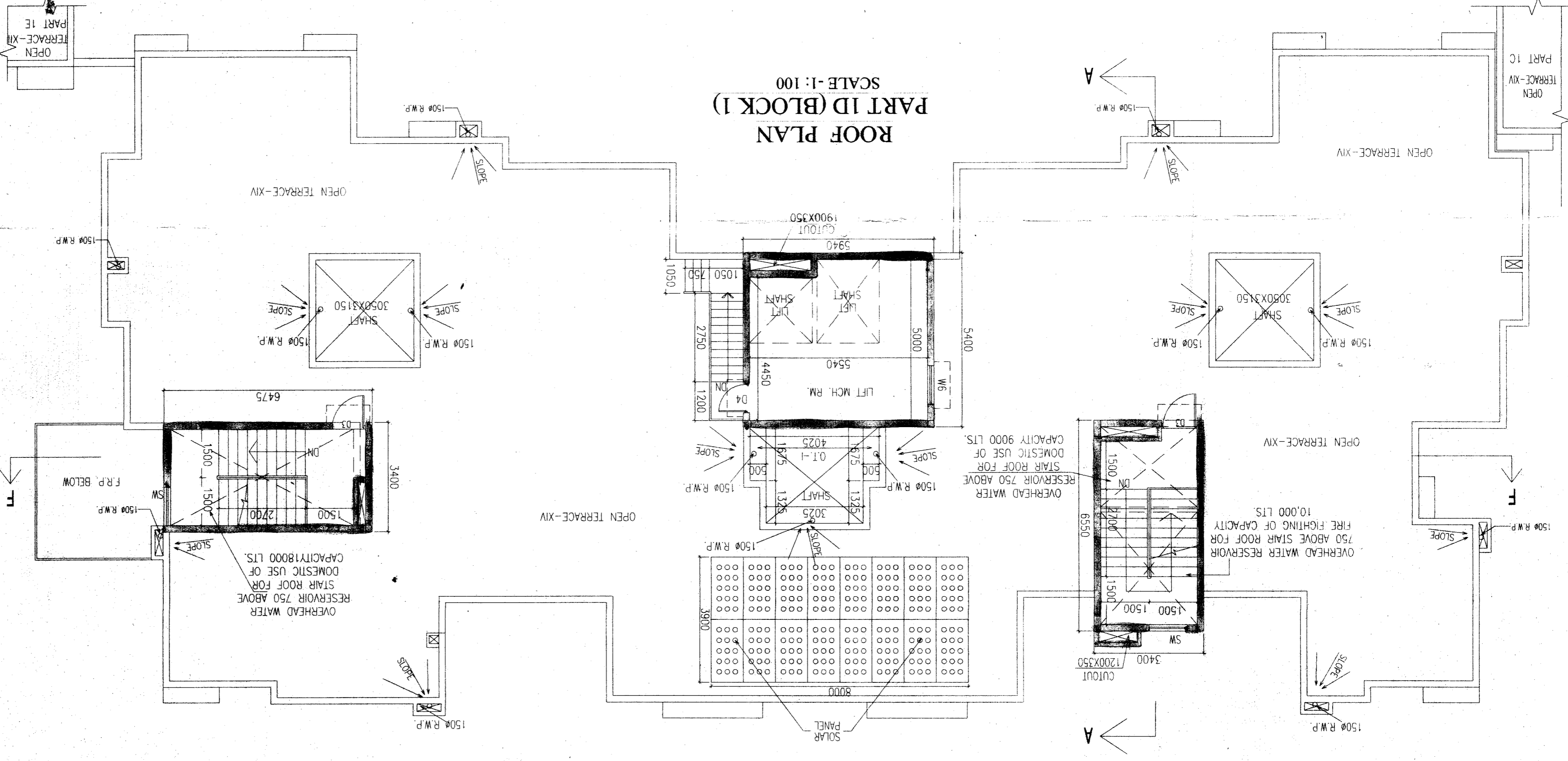
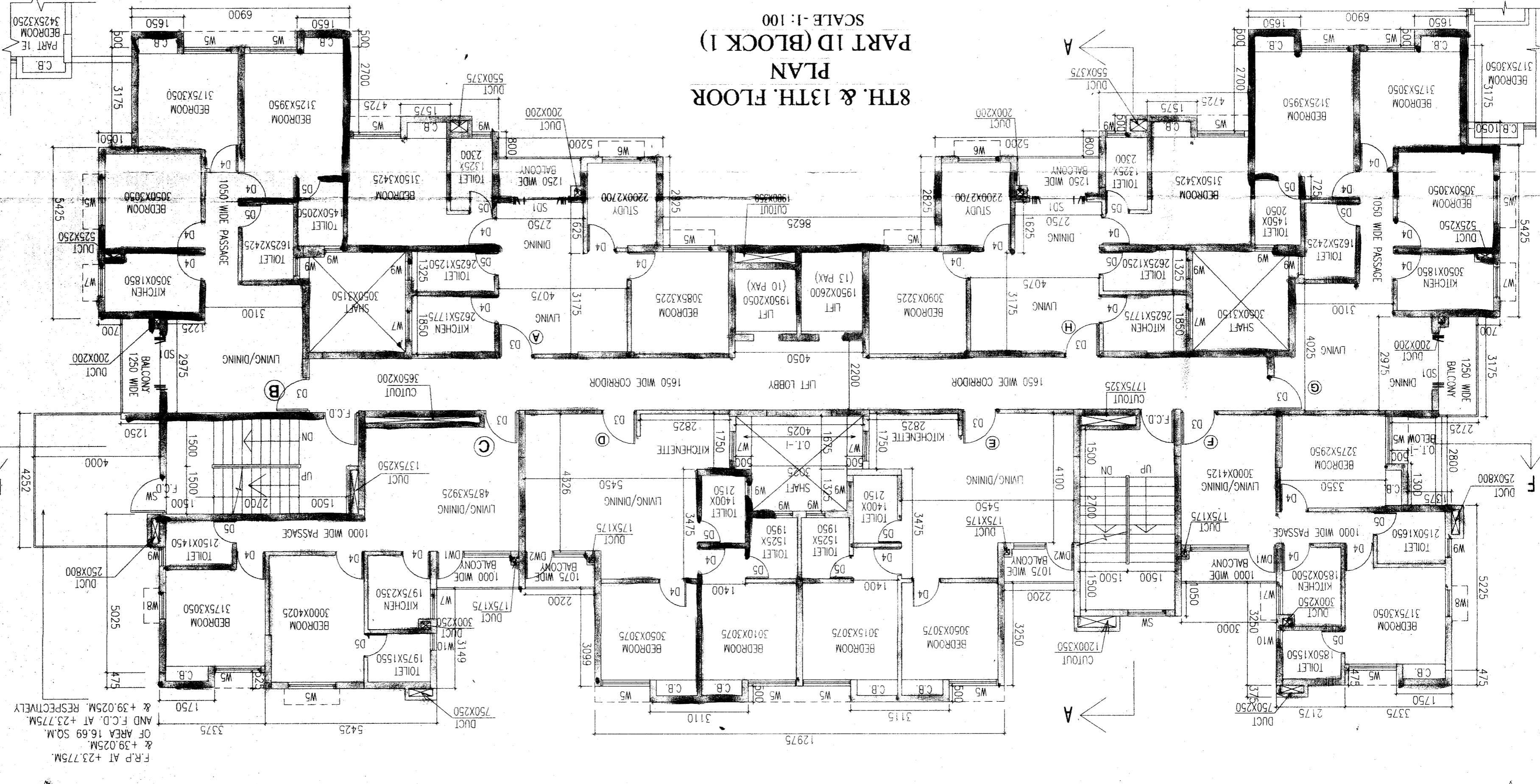
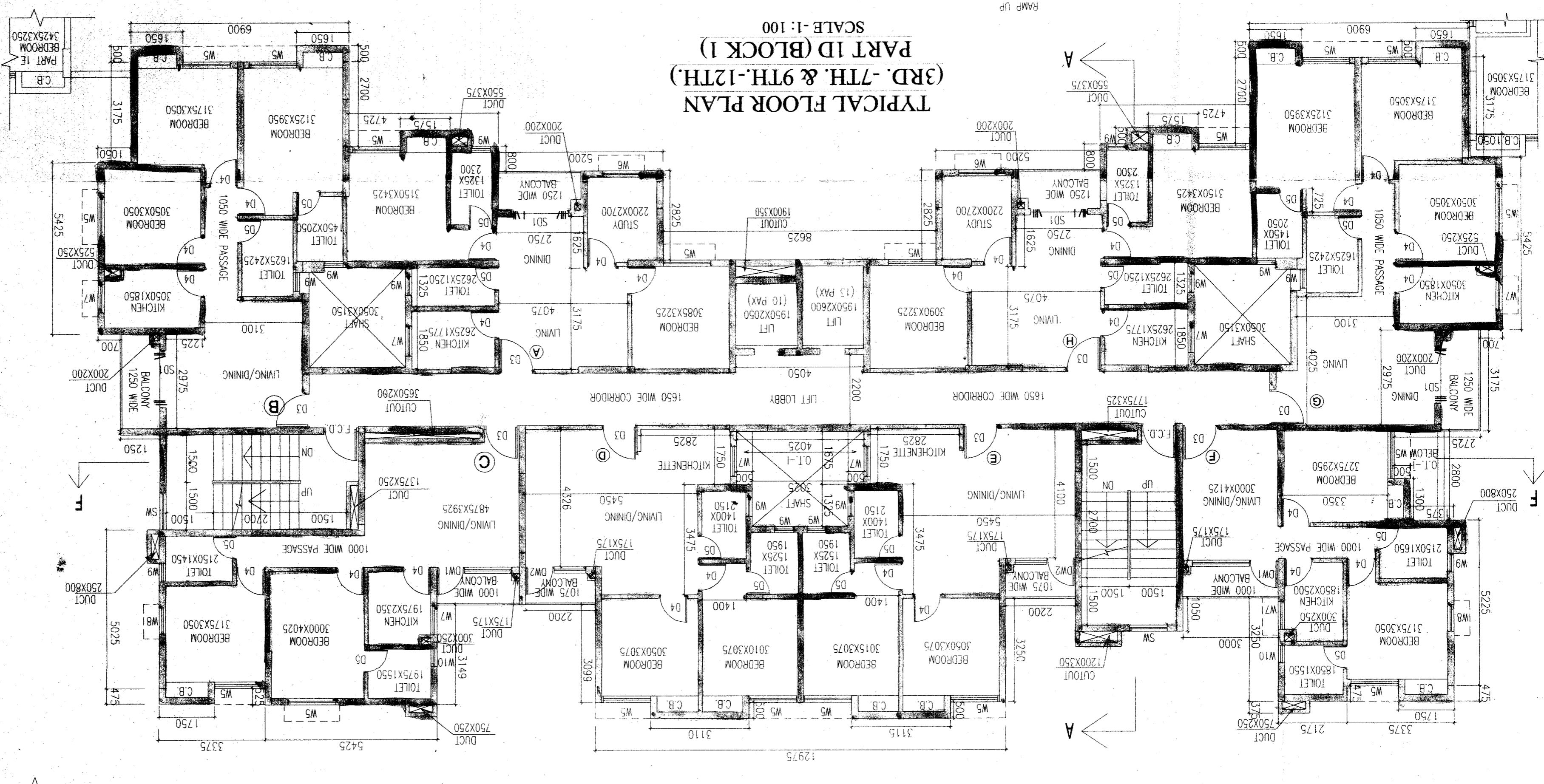
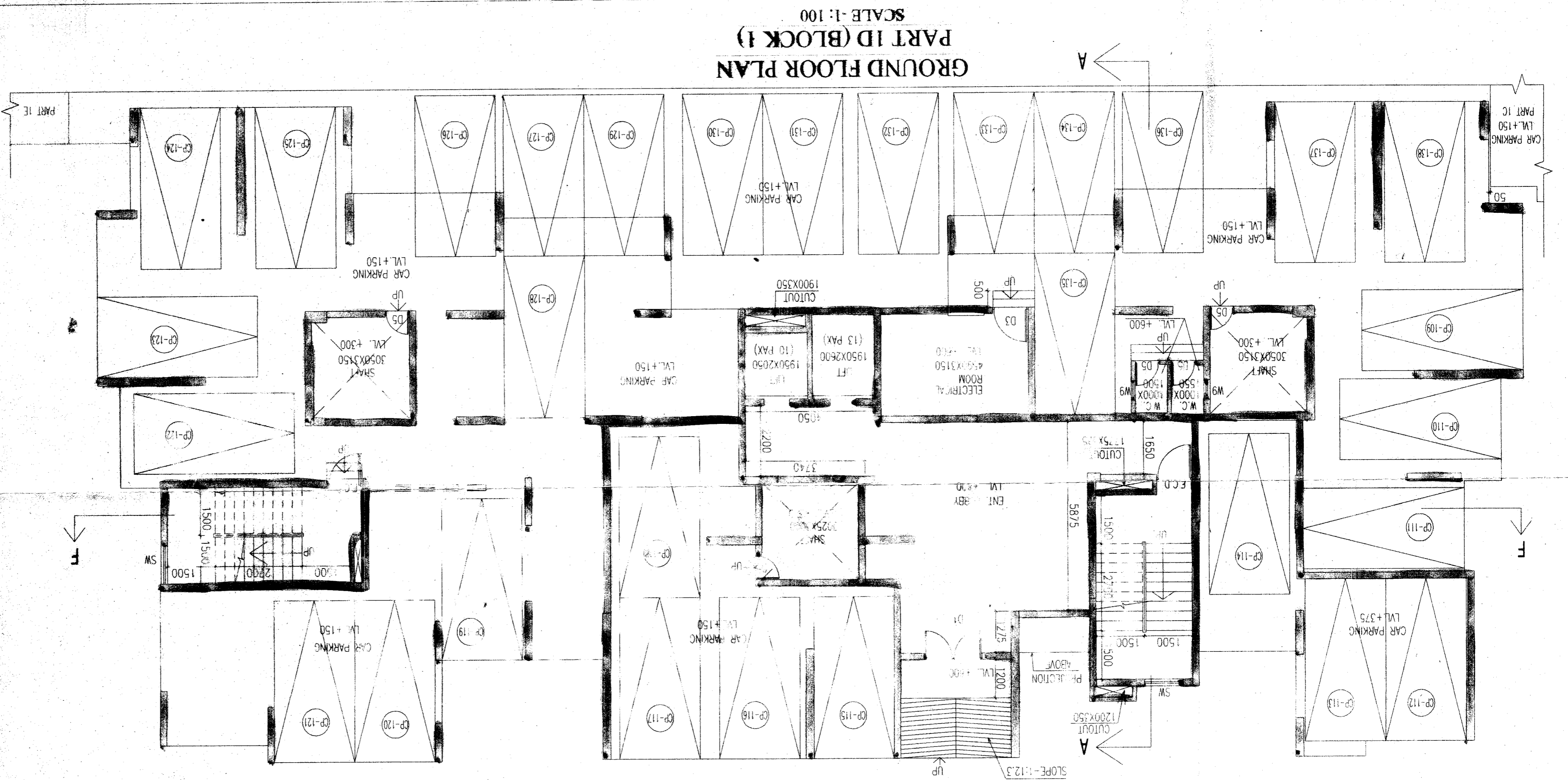
NAME OF OWNER
MR. SHYAM SUNDRAM MALANI
19/1, N. G. ROAD, KOLKATA - 700 007.

SIGNATURE OF OWNER
MR. SHYAM SUNDRAM MALANI

OTHER OWNER NAME
SILVER SPRING ADVISORY PVT LTD
HIMMAT ADVISORY (P) LTD
GAMNAN TRADERS PVT LTD
MEGARBIT ADVISORY PVT LTD
GLAZE COMMERCIAL PVT LTD
MULTITRAC ADVISORY PVT LTD
TRIDEV SALES PVT LTD
RAGHUNATH GOODS PVT LTD
HIMMATI RESEARCH PVT LTD
DIGNITI GOODS PVT LTD
DAMN BEAUTONS PVT LTD
PASSWORD VAPAR PVT LTD
KEARN NATH DHOOT
SANTOSH DEVI DHOOT
PUSHPA DHOOT
SHAM SUNDAR MALANI
MR. SHYAM SUNDRAM MALANI

NAME OF OWNER
MR. SHYAM SUNDRAM MALANI
19/1, N. G. ROAD, KOLKATA - 700 007.

SIGNATURE OF OWNER
MR. SHYAM SUNDRAM MALANI



NO.	AREA	PERIMETER	AREA
1	W1	21.00x18.00	378.00
2	W2	21.00x18.00	378.00
3	W3	21.00x18.00	378.00
4	W4	21.00x18.00	378.00
5	W5	21.00x18.00	378.00
6	W6	21.00x18.00	378.00
7	W7	21.00x18.00	378.00
8	W8	21.00x18.00	378.00
9	W9	21.00x18.00	378.00
10	W10	21.00x18.00	378.00
11	W11	21.00x18.00	378.00
12	W12	21.00x18.00	378.00
13	W13	21.00x18.00	378.00
14	W14	21.00x18.00	378.00
15	W15	21.00x18.00	378.00
16	W16	21.00x18.00	378.00
17	W17	21.00x18.00	378.00
18	W18	21.00x18.00	378.00
19	W19	21.00x18.00	378.00
20	W20	21.00x18.00	378.00
21	W21	21.00x18.00	378.00
22	W22	21.00x18.00	378.00
23	W23	21.00x18.00	378.00
24	W24	21.00x18.00	378.00
25	W25	21.00x18.00	378.00
26	W26	21.00x18.00	378.00
27	W27	21.00x18.00	378.00
28	W28	21.00x18.00	378.00
29	W29	21.00x18.00	378.00
30	W30	21.00x18.00	378.00
31	W31	21.00x18.00	378.00
32	W32	21.00x18.00	378.00
33	W33	21.00x18.00	378.00
34	W34	21.00x18.00	378.00
35	W35	21.00x18.00	378.00
36	W36	21.00x18.00	378.00
37	W37	21.00x18.00	378.00
38	W38	21.00x18.00	378.00
39	W39	21.00x18.00	378.00
40	W40	21.00x18.00	378.00
41	W41	21.00x18.00	378.00
42	W42	21.00x18.00	378.00
43	W43	21.00x18.00	378.00
44	W44	21.00x18.00	378.00
45	W45	21.00x18.00	378.00
46	W46	21.00x18.00	378.00
47	W47	21.00x18.00	378.00
48	W48	21.00x18.00	378.00
49	W49	21.00x18.00	378.00
50	W50	21.00x18.00	378.00
51	W51	21.00x18.00	378.00
52	W52	21.00x18.00	378.00
53	W53	21.00x18.00	378.00
54	W54	21.00x18.00	378.00
55	W55	21.00x18.00	378.00
56	W56	21.00x18.00	378.00
57	W57	21.00x18.00	378.00
58	W58	21.00x18.00	378.00
59	W59	21.00x18.00	378.00
60	W60	21.00x18.00	378.00
61	W61	21.00x18.00	378.00
62	W62	21.00x18.00	378.00
63	W63	21.00x18.00	378.00
64	W64	21.00x18.00	378.00
65	W65	21.00x18.00	378.00
66	W66	21.00x18.00	378.00
67	W67	21.00x18.00	378.00
68	W68	21.00x18.00	378.00
69	W69	21.00x18.00	378.00
70	W70	21.00x18.00	378.00
71	W71	21.00x18.00	378.00
72	W72	21.00x18.00	378.00
73	W73	21.00x18.00	378.00
74	W74	21.00x18.00	378.00
75	W75	21.00x18.00	378.00
76	W76	21.00x18.00	378.00
77	W77	21.00x18.00	378.00
78	W78	21.00x18.00	378.00
79	W79	21.00x18.00	378.00
80	W80	21.00x18.00	378.00
81	W81	21.00x18.00	378.00
82	W82	21.00x18.00	378.00
83	W83	21.00x18.00	378.00
84	W84	21.00x18.00	378.00
85	W85	21.00x18.00	378.00
86	W86	21.00x18.00	378.00
87	W87	21.00x18.00	378.00
88	W88	21.00x18.00	378.00
89	W89	21.00x18.00	378.00
90	W90	21.00x18.00	378.00
91	W91	21.00x18.00	378.00
92	W92	21.00x18.00	378.00
93	W93	21.00x18.00	378.00
94	W94	21.00x18.00	378.00
95	W95	21.00x18.00	378.00
96	W96	21.00x18.00	378.00
97	W97	21.00x18.00	378.00
98	W98	21.00x18.00	378.00
99	W99	21.00x18.00	378.00
100	W100	21.00x18.00	378.00